

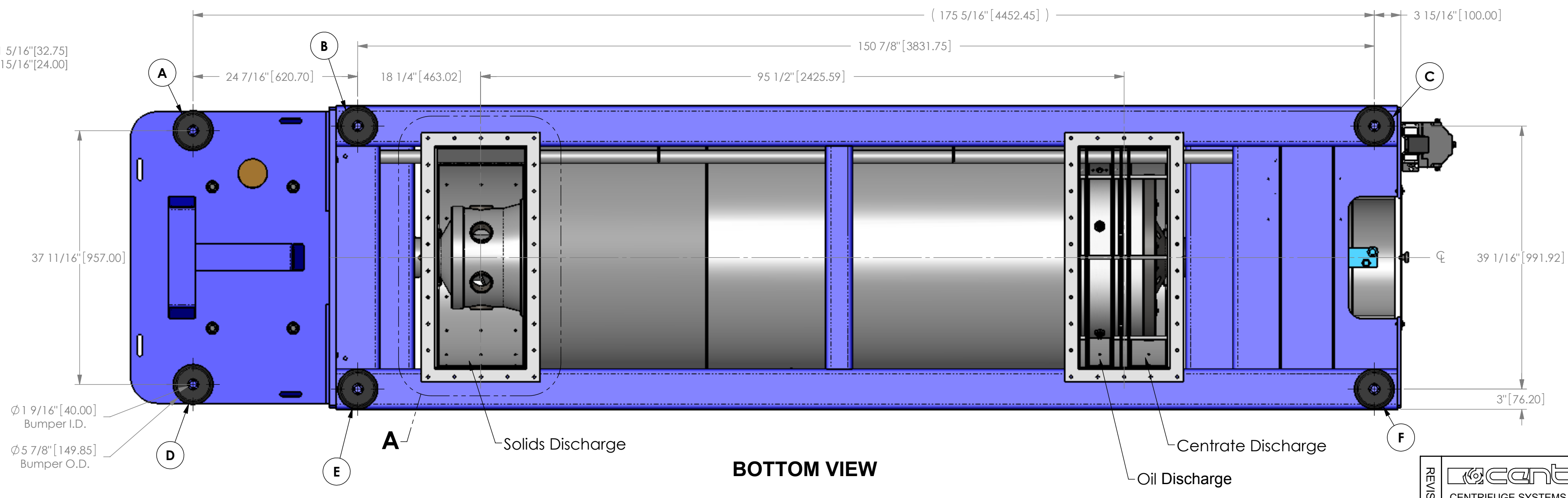
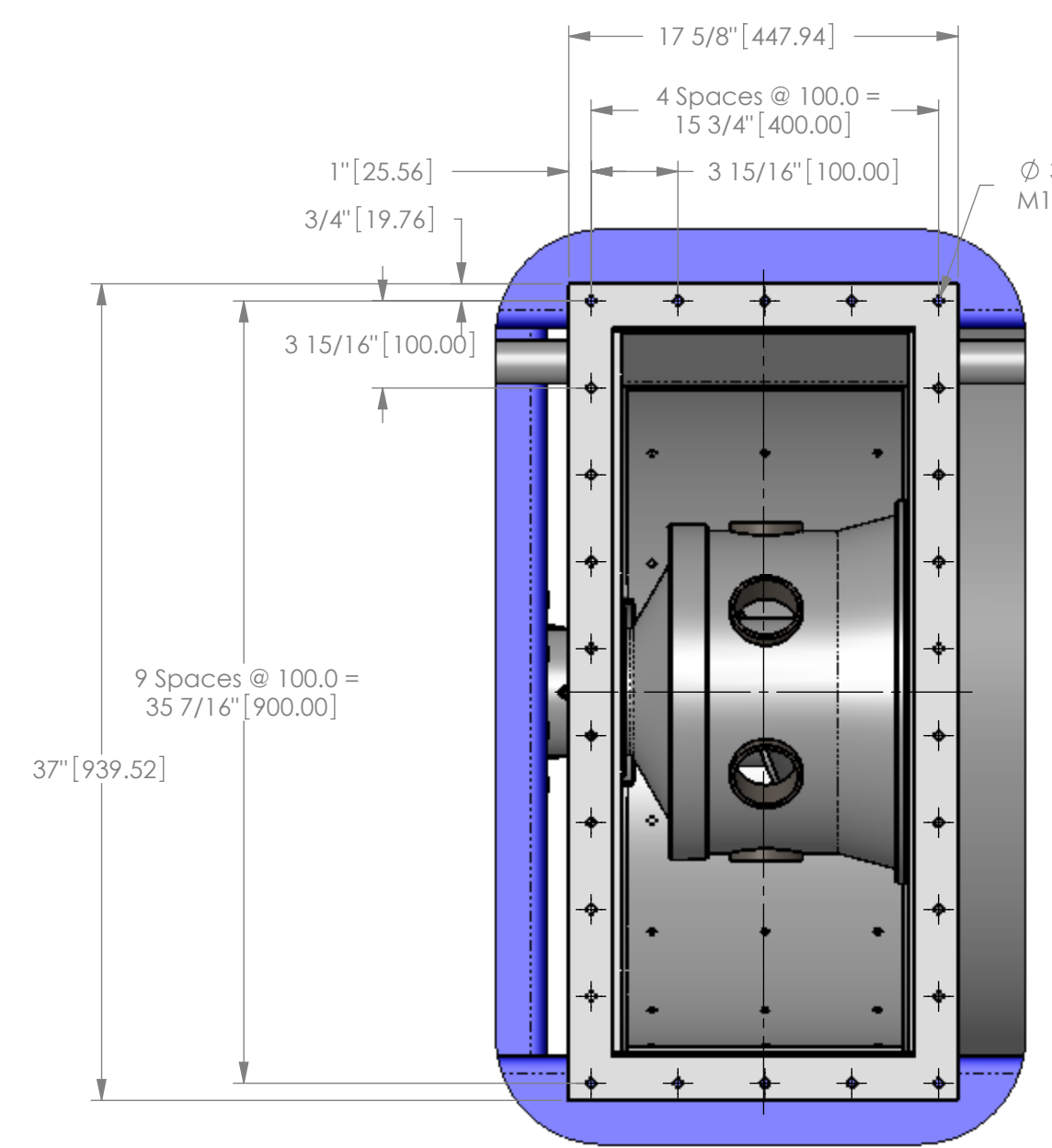
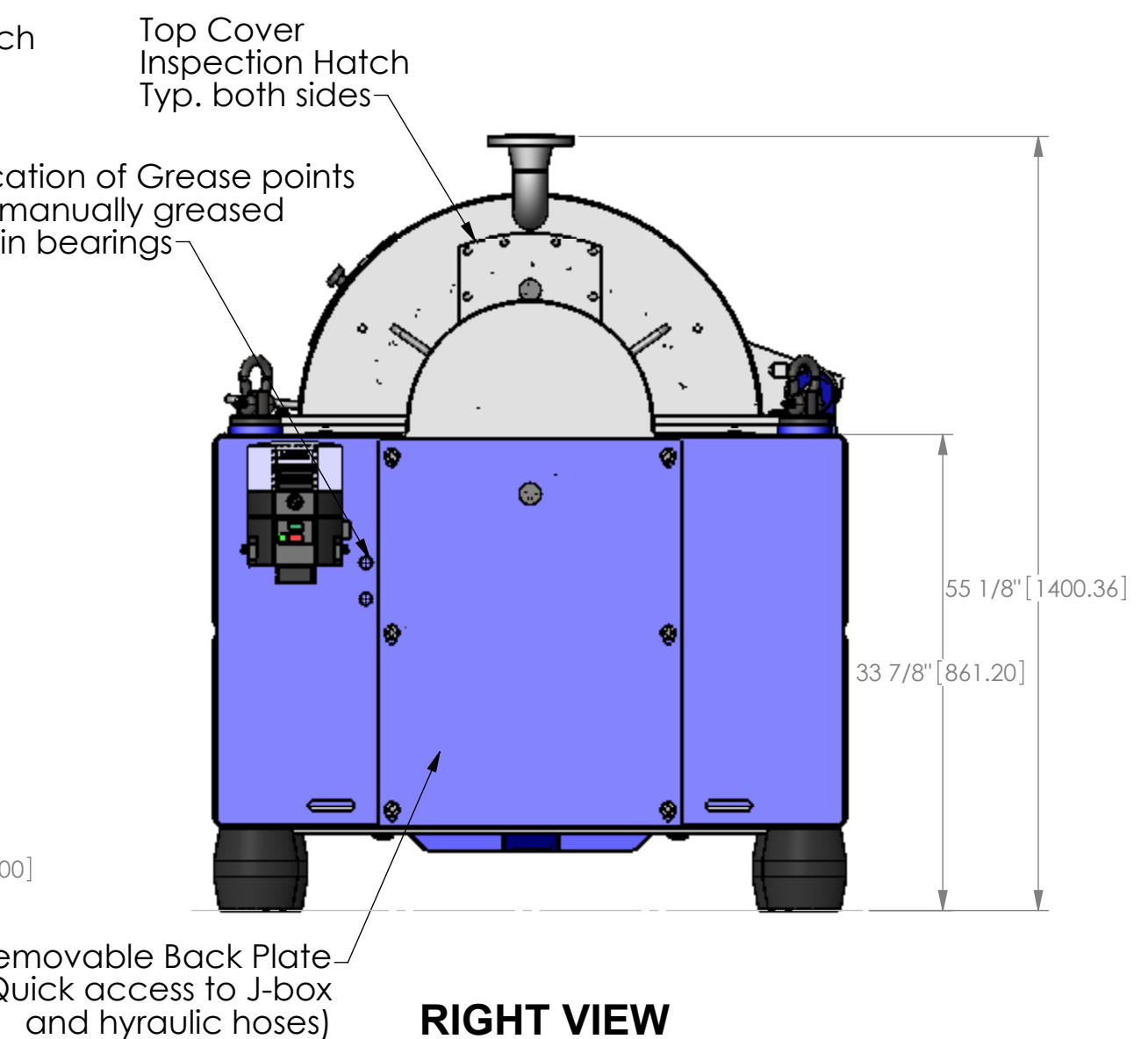
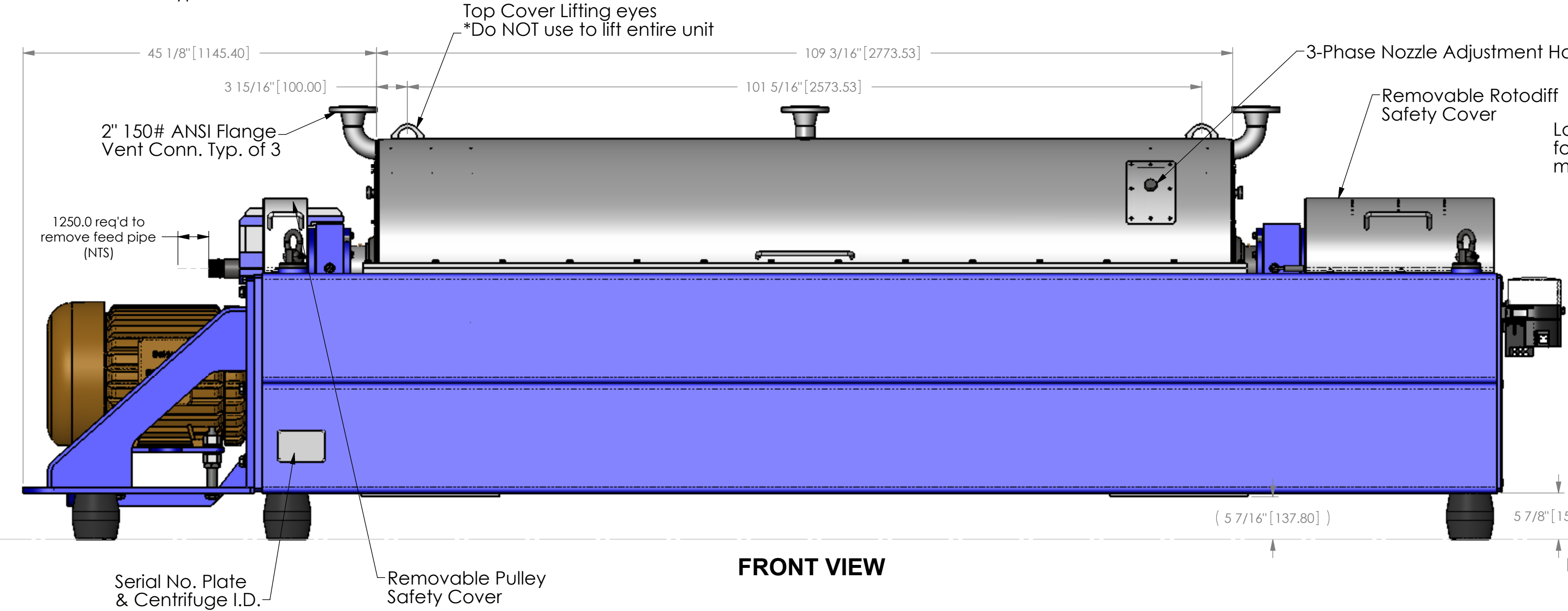
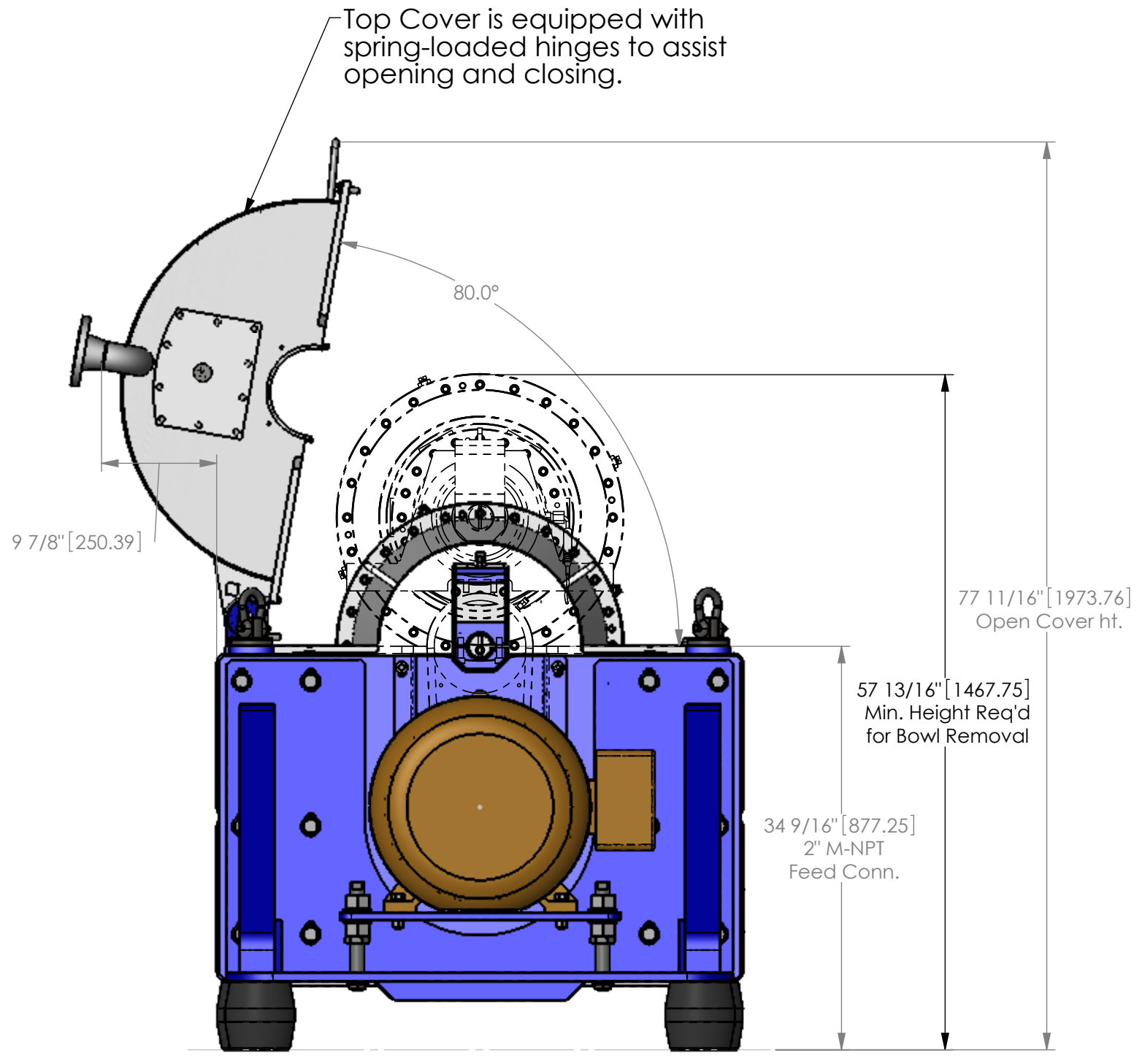
Weights:	lbs. [kg]
Rotating Assembly	3700 [1678.3]
Bowl filling with SP 1.0	785 [356.0]
Complete Centrifuge (w/o filling)	10000 [4536.0]

Static loads below each corner of complete centrifuge:	lbs. [kg]
A	2132.6 [967.4]
B	2230.9 [1011.9]
C	625.0 [283.5]
D	2132.6 [967.4]
E	2230.9 [1011.9]
F	625.0 [283.5]

Dynamic loads below each corner of complete centrifuge:	lbs. [kg]
A	2365.1 [1072.8]
B	2385.0 [1081.8]
C	630.0 [285.8]
D	2365.1 [1072.8]
E	2385.0 [1081.8]
F	630.0 [285.8]

Dynamic loads below each corner of complete centrifuge w/o filling @ start up during critical:	lbs. [kg]
A	2665.8 [1209.2]
B	2788.6 [1264.9]
C	781.3 [354.4]
D	2665.8 [1209.2]
E	2788.6 [1264.9]
F	781.3 [354.4]

\*All Horizontal loads are approximately 5% of vertical loads.



\*ALL DIMENSIONS ARE IN MILLIMETERS. DIMENSIONS IN [ ] BRACKETS ARE IN INCHES.

		9586 58th Place Kenosha, WI 53144		THIS PRINT IS PROVIDED ON A RESTRICTED BASIS AND IS NOT TO BE USED IN ANY WAY DETRIMENTAL TO THE INTERESTS OF CENTRIFUGE SYSTEMS.	
DESIGNED BY: --- DATE: --- DRAWN BY: A.A. DATE: 8/10/05 CHECKED BY: A.A. DATE: 7/20/07 APPROVED BY: --- DATE: ---		TEL: (262) 654-6006 FAX: (262) 654-6063		TITLE: Cs21-4HC.01 3-Phase Centrifuge General Arrangement PROJECT: --- PART #: 14825 DRAWING #: M-D14825 SHEET: 1 OF 1 SCALE: 1:12 REV: ---	