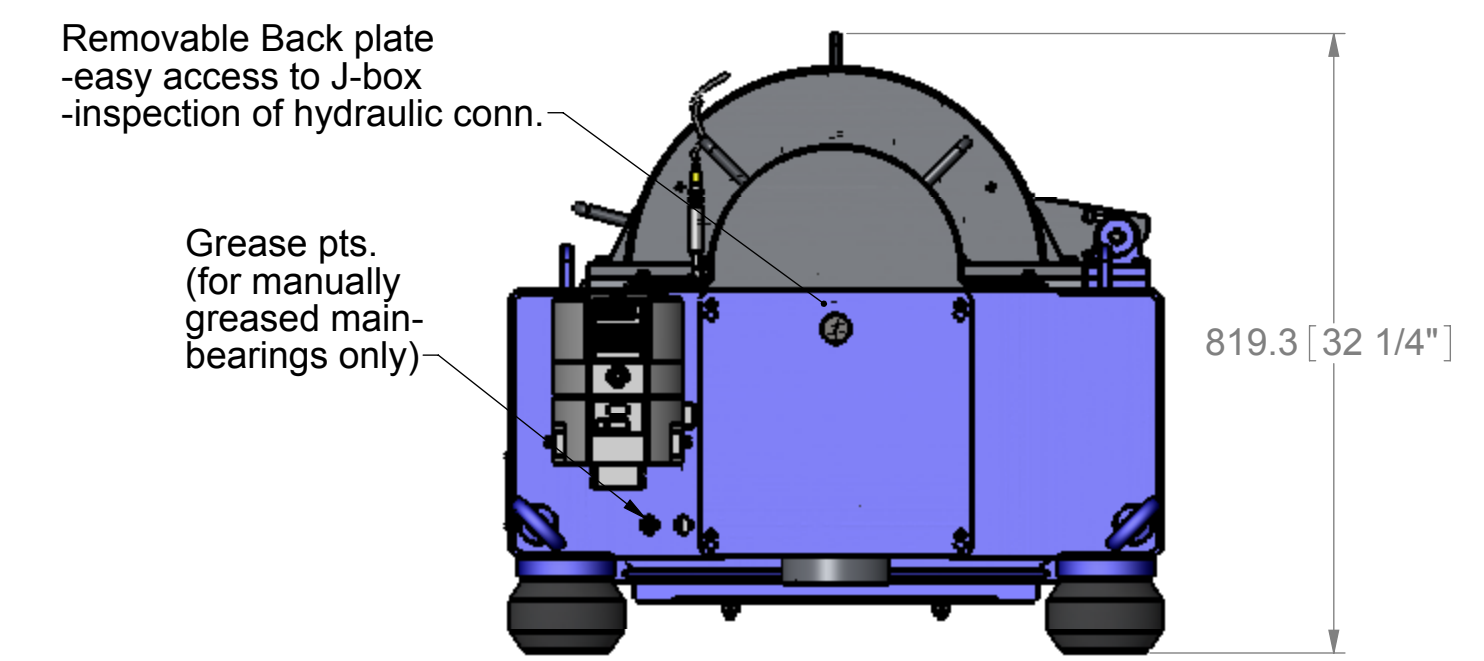
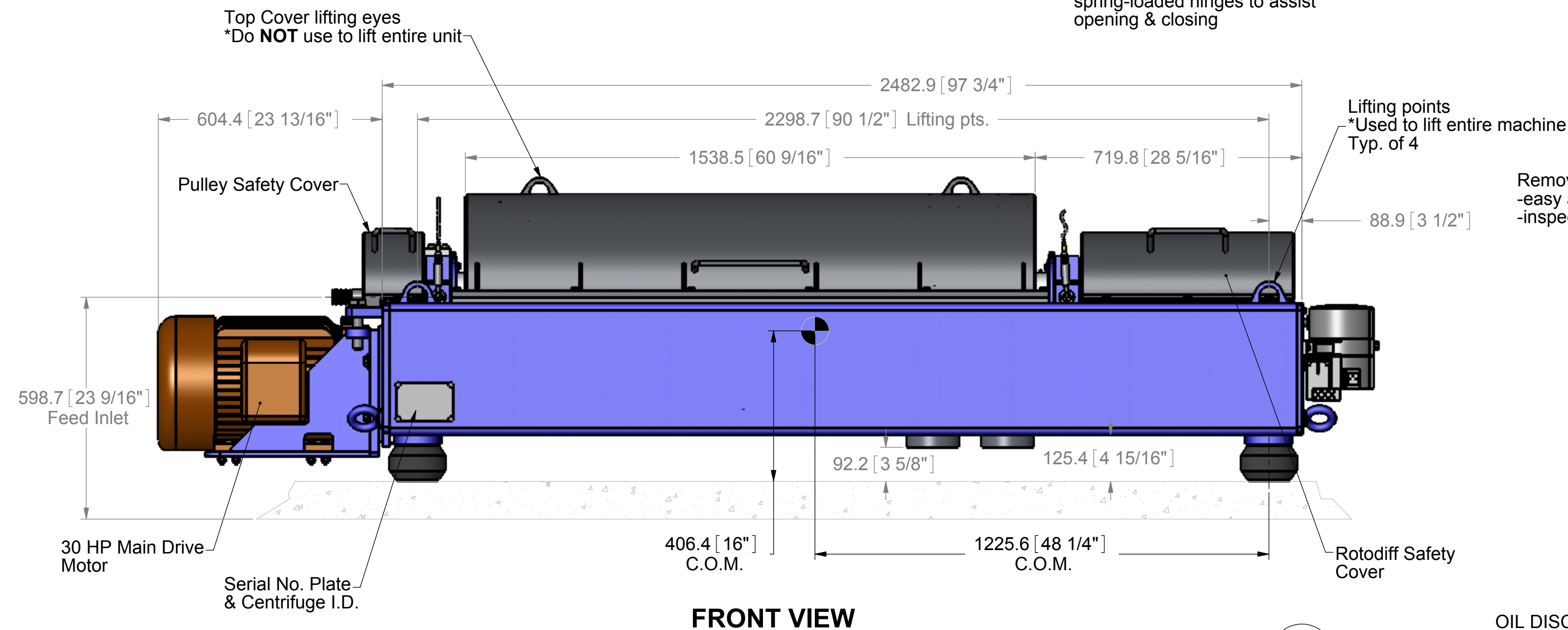
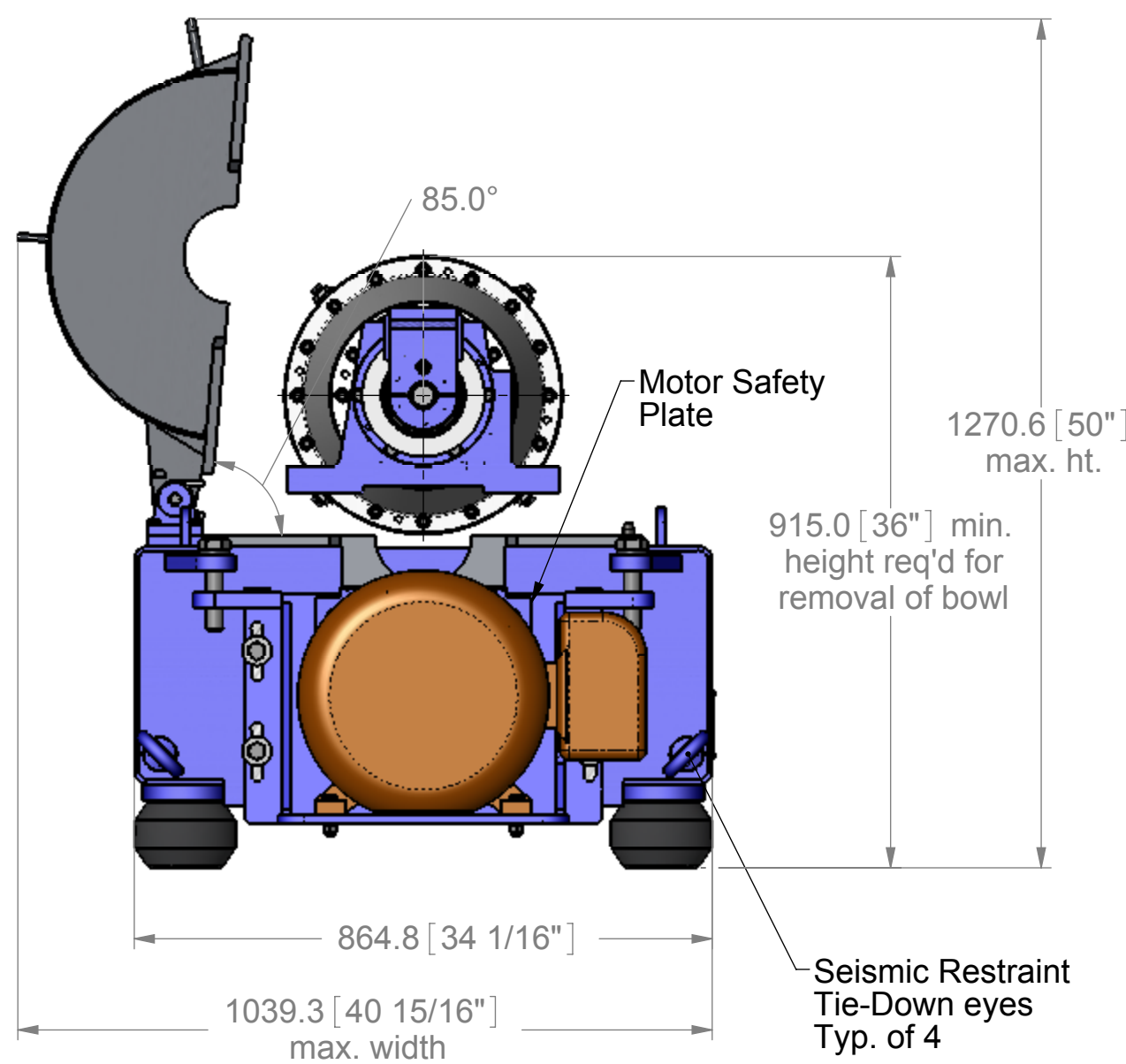


Weights:	lbs. [kg]
Rotating Assembly	1160 [527]
Bowl filling with SP 1.0	n/a
Complete Centrifuge (w/o filling)	3715 [1685]
Static loads below each corner of complete centrifuge:	
A	1024 [465]
B	1024 [465]
C	796 [361]
D	796 [361]
Dynamic loads below each corner of complete centrifuge:	
A	1127 [512]
B	1127 [512]
C	876 [398]
D	876 [398]
Dynamic loads below each corner of complete centrifuge w/o filling @ start-up during critical:	
A	1280 [581]
B	1280 [581]
C	995 [452]
D	995 [452]

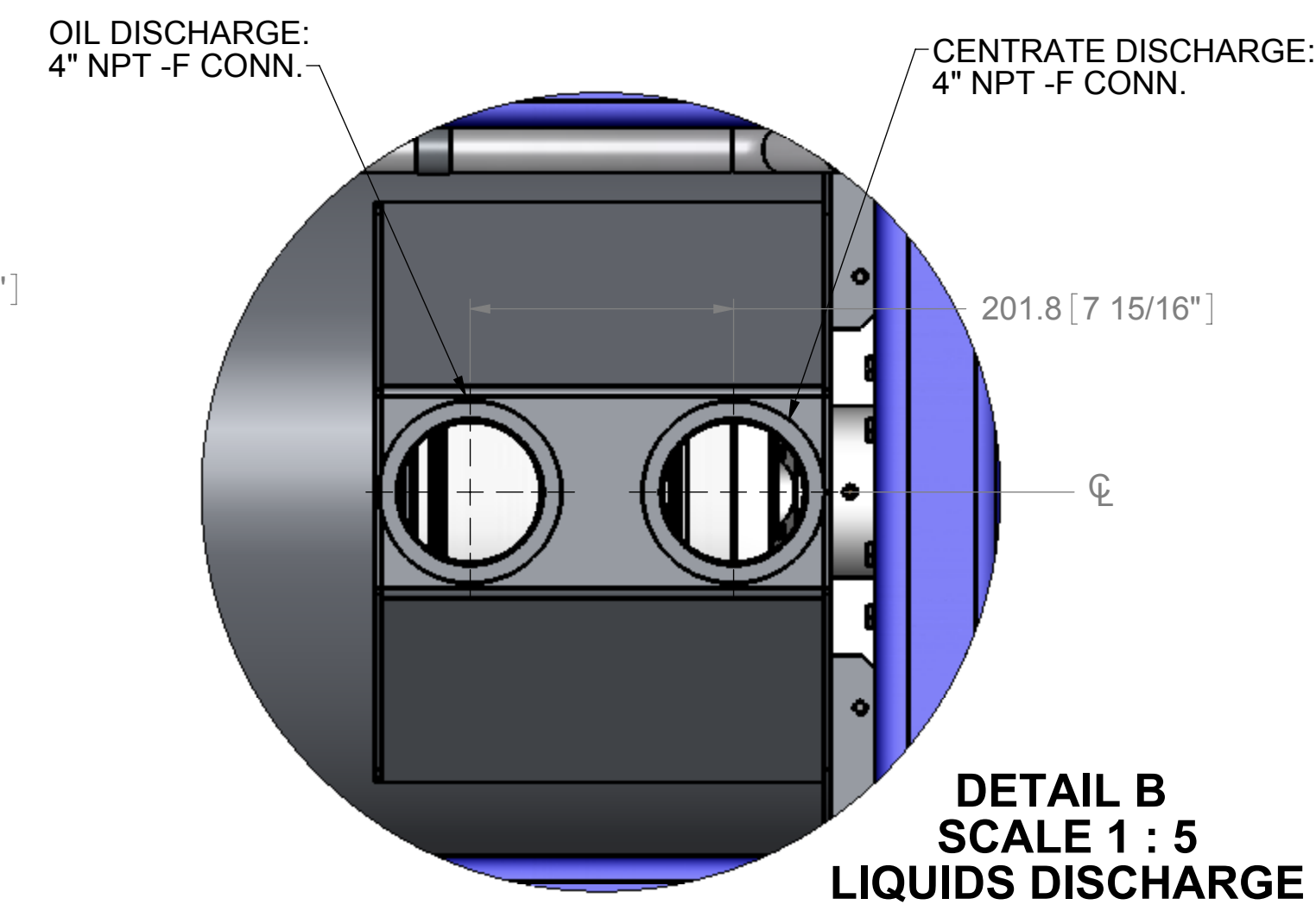
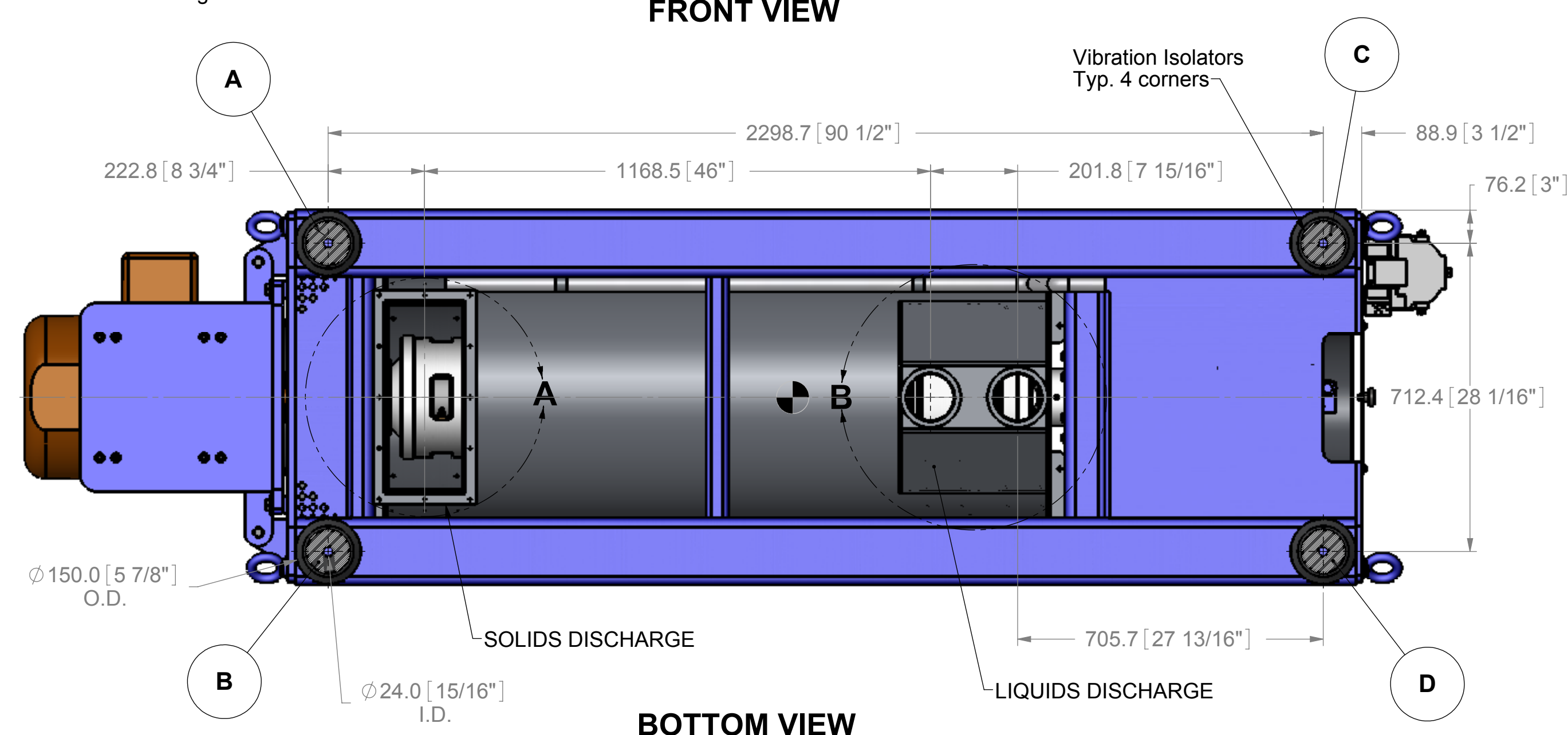
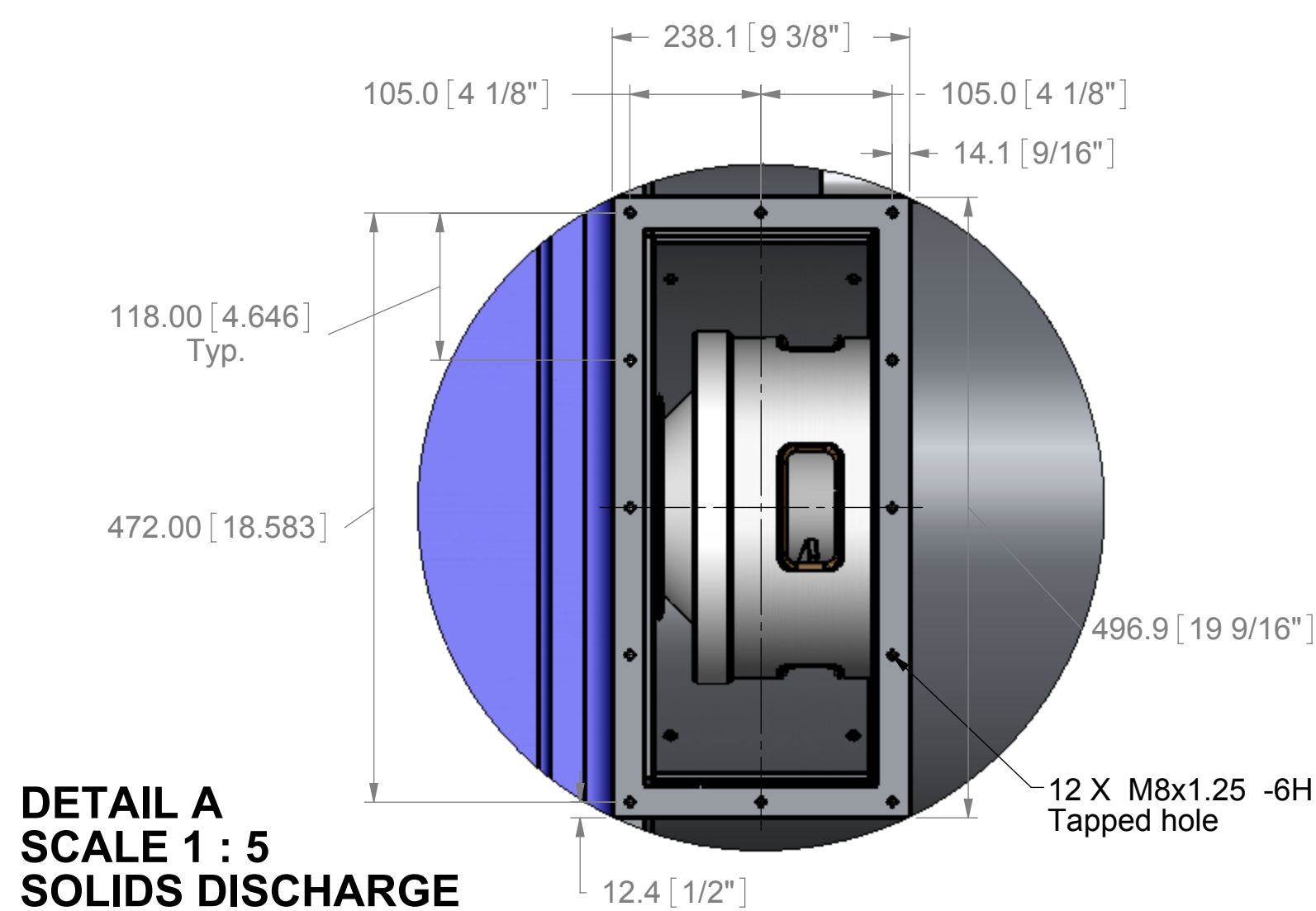
\*All Horizontal loads are approximately 5% of vertical loads.



LEFT VIEW

FRONT VIEW

RIGHT VIEW



BOTTOM VIEW

DETAIL B SCALE 1 : 5 LIQUIDS DISCHARGE

ALL DIMENSIONS ARE IN MILLIMETERS. DIMENSIONS IN [ ] BRACKETS ARE IN INCHES.

DETAIL A SCALE 1 : 5 SOLIDS DISCHARGE

		9586 58th Place Kenosha, WI 53144 Tel: (262) 654-6006 Fax: (262) 654-6063	THIS PRINT IS PROVIDED ON A RESTRICTED BASIS AND IS NOT TO BE USED IN ANY WAY DETRIMENTAL TO THE INTERESTS OF CENTRIFUGES SYSTEMS. Title: Cs14-4.01 3-Phase Centrifuge General Arrangement Project:
Drawn by: A.A. Date: 11/27/06 Checked by: Date: Approved by: Date:	3rd Angle Projection Material: N/A Estimated weight (kg): 3715	Part #: 14459 Drawing #: M-D14459 Shit: 1 OF 1 Scale: 1:10 REV	REVISION CAD ONLY